



## Grants Close

**£685,000**

Located within a quite cul-de-sac is this extended and modernised 4 bedroom, 2 bathroom property situated in a desirable residential road, within walking distance to Mill Hill East Station. The ground floor boasts a bright and spacious reception room, dining area and a modern open plan kitchen - diner with direct access onto a well maintained patio & raised garden. W/C. The first floor consist of 2 spacious bedrooms, 1 single bedroom and a family bathroom, on the second floor there is a Master bedroom and an additional bathroom. Further benefits include excellent transport links, walking distance to Waitrose and virgin active gym and offered in an excellent decorative order. Sole Agent

### Viewing

Please contact our Mill Hill Office on 020 8959 0011 if you wish to arrange a viewing appointment for this property or require further information.



4



2



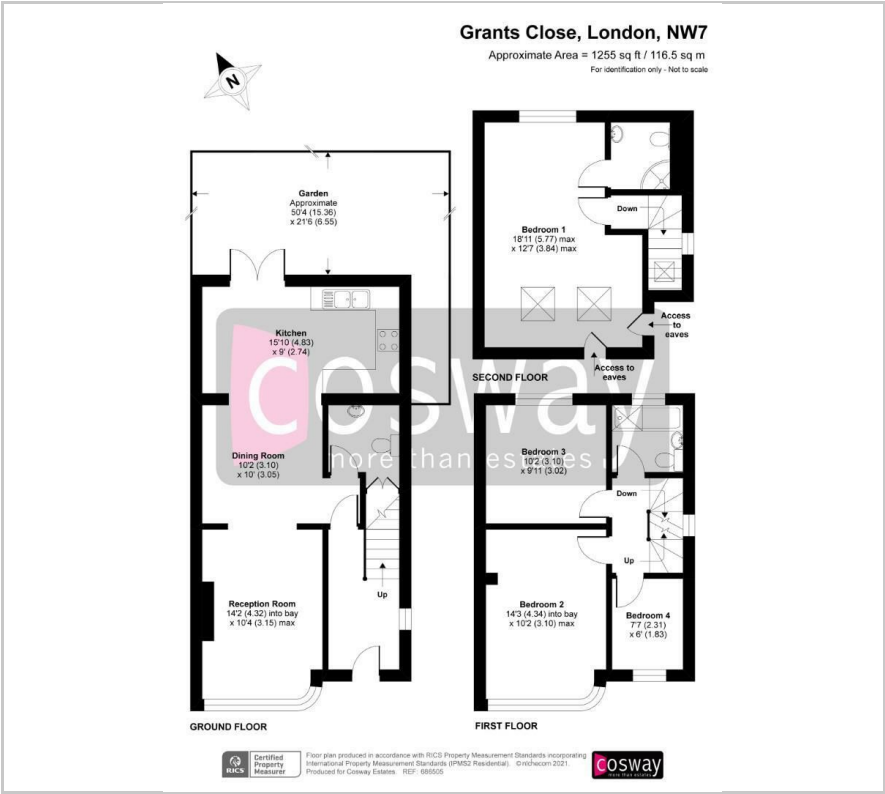
2



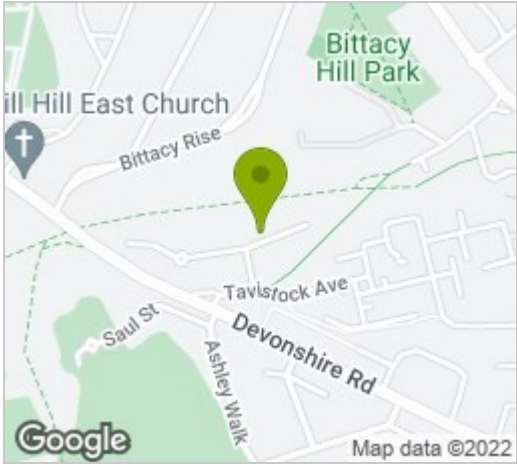
D



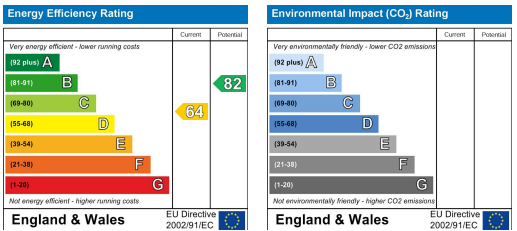
Floor Plan



Area Map



Energy Efficiency Graph



These particulars, whilst believed to be accurate are set out as a general outline only for guidance and do not constitute any part of an offer or contract. Intending purchasers should not rely on them as statements of representation of fact, but must satisfy themselves by inspection or otherwise as to their accuracy. No person in this firm's employment has the authority to make or give any representation or warranty in respect of the property.